

COVID-19 PROTOCOLS as of 15 July 2020

These general principles will guide Gloria Dei as it reopens for the 20-21 school year:

- ✓ Gloria Dei will implement recommended safety protocols to the highest degree possible while asking community members to recognize that some level of risk will always be present in a school setting.
- ✓ Gloria Dei believes that diligent monitoring of children's health by both staff and parents and responsible, collegial transparency between school and parents will improve the well-being of all community members.
- ✓ Gloria Dei will work cooperatively with parents and with Public Health – Dayton & Montgomery County to promote safety and trust in the school community and to limit the spread of the coronavirus.
- ✓ Gloria Dei recognizes the need for a cogent plan to reduce risk of viral infection while recognizing that differences in classroom sizes, ages of children and risk factors will lead to variabilities in the plan.

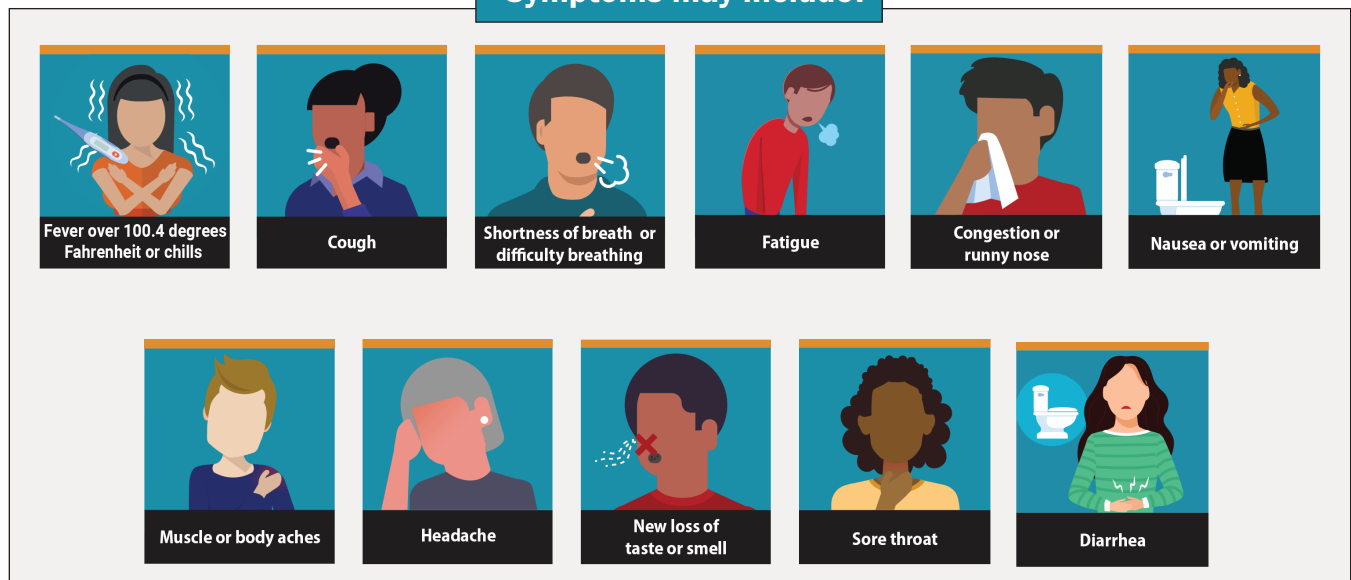
Daily Self-Monitoring and Arrival at School

Students, family members and staff should self-monitor symptoms and temperatures in the morning before leaving home. All students (and sometimes their parents as role models) are expected to cooperate with temperature-taking in car line and prior to entering the building. Elementary and middle school students are required to be wearing a mask properly affixed prior to entering car line.

Parents of students who arrive when there is not a staffed car line are required to walk students to the office or have their students wait in the car for the beginning of car line. It is essential that parents **do not send students directly to their classrooms or send students to the office alone.**

If either parent or student has a temperature or other Covid symptoms (such as a cough or runny nose), student will be asked to return home. Otherwise, if entering via the office, an entry pass will be issued to the student.

Symptoms may include:



Incorporating guidelines for Family, Caregivers and Staff exposed to COVID-19 (Quarantine)

Staff or Parents/Caregivers **should notify the school immediately** if they have been exposed to COVID-19 or if any member of the household has been diagnosed or is presumed to have COVID-19.

When this occurs, the reported staff or student must self-quarantine at home for 14 days and Gloria Dei will consider other learning options for the quarantined student. If no symptoms and two negative test results and permission of Head of School, the staff or student may return to school earlier than 14 days.

COVID-19 PROTOCOLS as of 15 July 2020 (cont'd)

Plan for a Suspected Case or Positive Case

Staff or student begins exhibiting symptoms of COVID-19 during the school day:

- Students will be immediately isolated comfortably in an outdoor space or separate room and monitored by a staff member maintaining social distance and wearing a mask.
- The sick student's family will be called and will be expected to pick up the sick student as quickly as possible.
- Ill staff members will be required to leave campus. They will be expected to schedule virus testing within 4 hours and to schedule two more tests as soon as symptoms subside.
- Parents or an ambulance will be called to transport anyone with severe COVID symptoms to a healthcare facility. Ambulance personnel will be alerted that the person may have COVID-19.

In the event that a student or staff member tests positive for COVID-19

- Gloria Dei office will contact Public Health to report the case at 937-225-4508.
- Gloria Dei staff will maintain information on potential close contacts (updated attendance records, seating charts, and contact information) and cooperate with Public Health in contact tracing.
- Any staff or student who has tested positive or has had close contact to a confirmed COVID -19 case will need to quarantine at home for 10 days since onset of symptoms or for 14 days if asymptomatic. If tested and two negative results and permission of Head of School, the staff or student may return to school earlier.
- Asymptomatic staff are required to schedule tests on days 4 and 5 of quarantine.
- Definition of close contact: someone within 6 ft. of a case for at least 15 minutes during the contact window.
- Definition of contact window:
 - o Symptomatic case - 48 hours before symptom onset date until the date the case is isolated.
 - o Asymptomatic case - 48 hours before the specimen was collected until the case was isolated.

Returning to School After Illness

Student or staff diagnosed as having COVID-19 with symptoms must meet the following criteria to return to school:

- 3 days with no fever (without using fever reducing medication) **and**
- other symptoms improved **and**
- 10 days since symptoms first appeared or two negative tests **and**
- permission of Head of School **and**
- adequate staff are available (not quarantined) to teach cohort in person.



Student or staff diagnosed as having COVID-19 without symptoms (asymptomatic) must meet the following criteria to return to school:

- 14 days have passed since test without any symptoms developing or two negative tests **and**
- permission of Head of School **and**
- adequate staff are available (not quarantined) to teach cohort in person.

COVID-19 PROTOCOLS as of 15 July 2020 (cont'd)

Lunch/Snacks/Handwashing

- No common utensils or dishware will be provided.
- Children will eat with their cohorts and seats will be assigned.
- Water bottles will be provided by school, sanitized and left at school. **No water bottles from home, please.**
- All students are required to wash or sanitize hands every time they enter or exit a school building and before and after snacks and lunch.

Cohorts and Face Masks or Face Shields

Classroom occupancy/cohort creation will be based on state and local guidelines with the maximum amount of safety considerations possible for the specific age group, including 6 feet of separation where possible.

Face masks will be worn indoors by all elementary and middle school students and outdoors whenever a 6' distance cannot be maintained unless it is unsafe for an individual to do so. "Breather breaks" will be provided at regular intervals.

Face masks will be optional for toddlers and primary children.

All school staff and volunteers must wear face masks or face shields where wearing a mask would significantly interfere with the learning process or in cases where it is unsafe for an individual to wear a mask..



Gloria Dei will minimize the sharing of school supplies in elementary and middle school classrooms.

Parents and Visitors

Parents/visitors are required to sign in at the office and are required to wear face masks. Parents/visitors are encouraged to limit visits to 15 minutes or less during a pandemic.

Parents/visitors will have their temperatures taken and will be required to answer questions appropriately on Gloria Dei's COVID-19 symptom questionnaire.

For the safety of the whole community, staff will not allow students or parents or visitors to enter a school building without a pass from the school office. Students who arrive at school during a staffed car line will not need a pass.

Parents/visitors will be prohibited from entering school buildings when Montgomery County is at Emergency Level 3 or above.



COVID-19 PROTOCOLS as of 15 July 2020 (cont'd)

School Vans

Field trips and activities requiring transportation will be canceled until further notice except in Middle School which will follow transportation guidelines for local team sports. NOTE: Middle School parents are encouraged to provide transportation for their own children whenever possible.

In the few instances of student transportation to or from school, Gloria Dei will seat siblings together in vans, provide spacing between non-family groups and limit passengers to one cohort at a time whenever possible. Seats will be assigned to assist with contact tracing.

Face masks are required for drivers and students at all times in all vans, with the possible exception of upset toddlers.

Vans will be aired out and high touch areas will be sanitized between cohorts.

Recess

Students in elementary and middle school will be permitted to lower masks when outdoors and social distancing (6' separation)

Students in elementary and primary will remain in cohorts and in their cohorts' designated play spaces during recess.

Cleaning/Sanitizing

Gloria Dei will clean facilities thoroughly every day.

Gloria Dei will use sanitizers, hand sanitizers and cleaners that are effective against COVID-19.

Gloria Dei will sanitize surfaces at least twice a day, paying close attention to high touch areas, shared materials, sinks, countertops, toilet seats, handles, doorknobs, desks and chairs.

Gloria Dei will make sanitation wipes or paper towels and disinfectants labeled for use against COVID-19 available in each room.

NOTE: Gloria Dei will change these protocols and alert parents as State and Federal guidelines are updated.